

Thank You!

Thank you so much for downloading this resource! I hope you love using this activity with your kiddos as much as I loved creating it!

Terms of Use

This resource is for personal use only. You may download and print this file for use at home or in your classroom.

You may not copy, modify, reproduce, or share any part of this resource.

Please provide others with a link to one of our shops listed below so that they can download this resource for themselves.

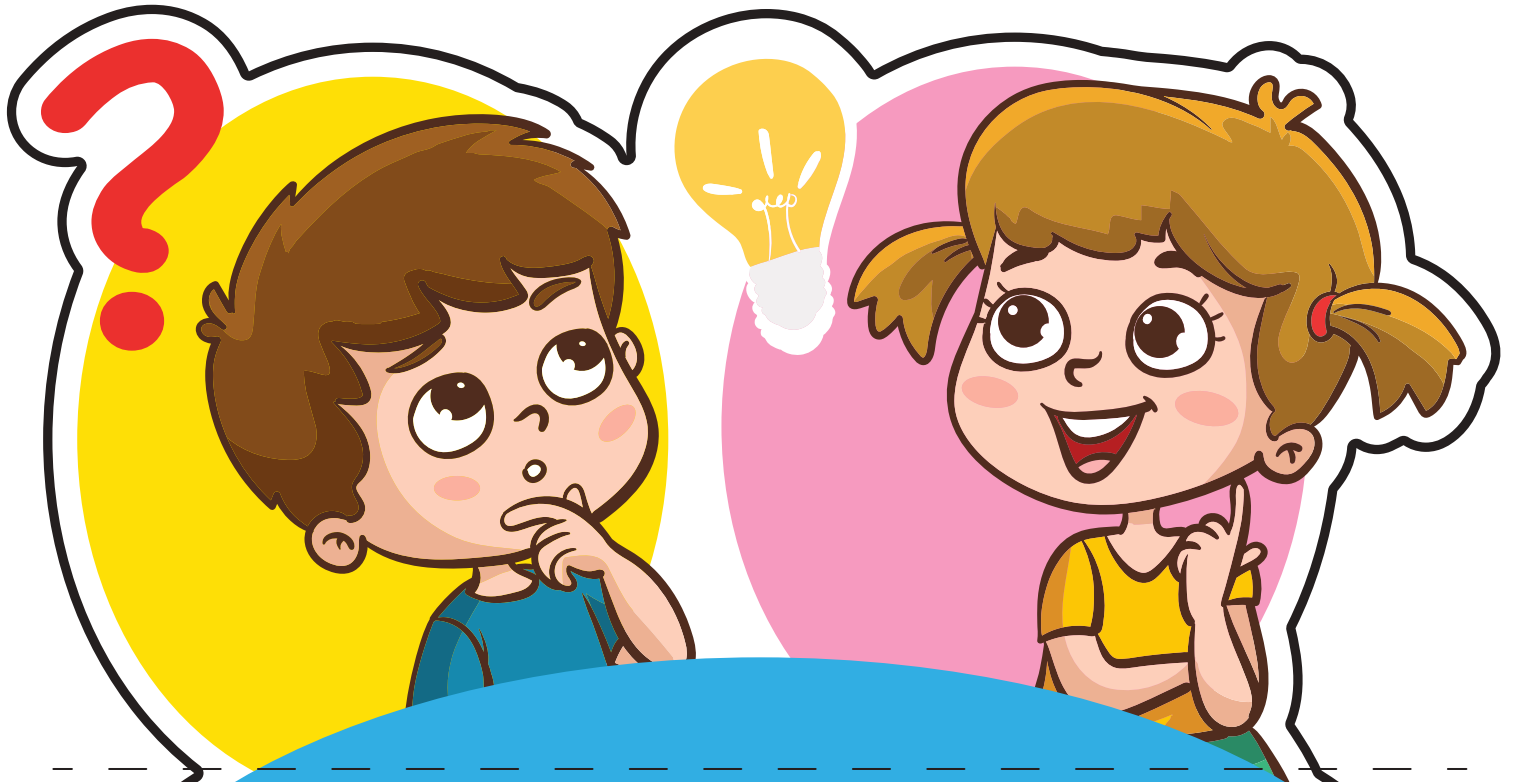
NOTE: You may NOT upload this resource to any file sharing sites.

Where to Find Our Printables

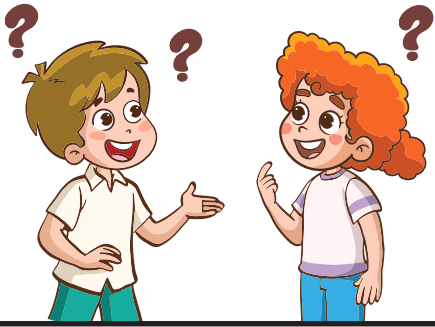
- homeschoolpreschool.net
- homeschoolhappiness.com
- www.teacherspayteachers.com/store/prek-to-primary

Clipart/Fonts from:





SCIENTIFIC METHOD



ASK A QUESTION

This is the starting point where scientists or students identify a problem or a phenomenon they want to understand. It usually begins with "Why?" or "How?" or "What happens if?"



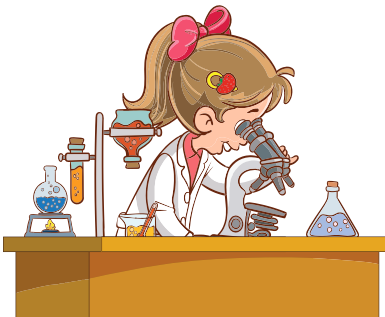
DO BACKGROUND RESEARCH

Before jumping into an experiment, it's important to gather information about the topic. This helps in understanding what is already known and shaping a good hypothesis.



FORM A HYPOTHESIS

A hypothesis is a testable prediction based on what you already know. It usually follows the format of "If...then..." and gives a clear, testable statement.



CONDUCT AN EXPERIMENT

This step involves setting up an experiment where you control one variable (independent variable) and keep everything else the same. Collect data and observe what happens.



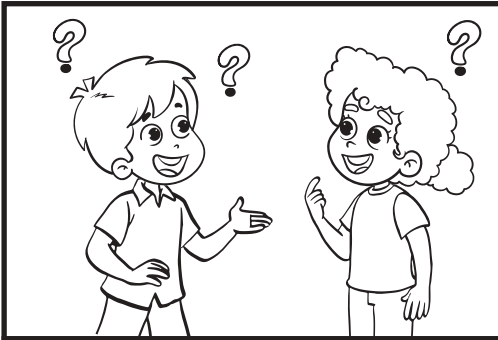
ANALYZE THE DATA

After gathering data from the experiment, it's time to analyze the results. This is where you look at patterns or differences to see if they support or refute your hypothesis.



DRAW A CONCLUSION

Finally, based on your data, determine if your hypothesis was correct. If the data supports the hypothesis, it's confirmed. If not, it may need to be revised or a new hypothesis can be formed.



ASK A QUESTION

This is the starting point where scientists or students identify a problem or a phenomenon they want to understand. It usually begins with "Why?" or "How?" or "What happens if?"



DO BACKGROUND RESEARCH

Before jumping into an experiment, it's important to gather information about the topic. This helps in understanding what is already known and shaping a good hypothesis.



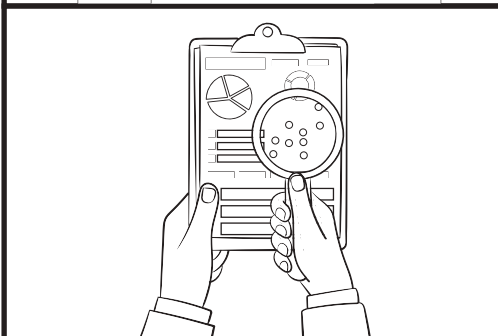
FORM A HYPOTHESIS

A hypothesis is a testable prediction based on what you already know. It usually follows the format of "If...then..." and gives a clear, testable statement.



CONDUCT AN EXPERIMENT

This step involves setting up an experiment where you control one variable (independent variable) and keep everything else the same. Collect data and observe what happens.



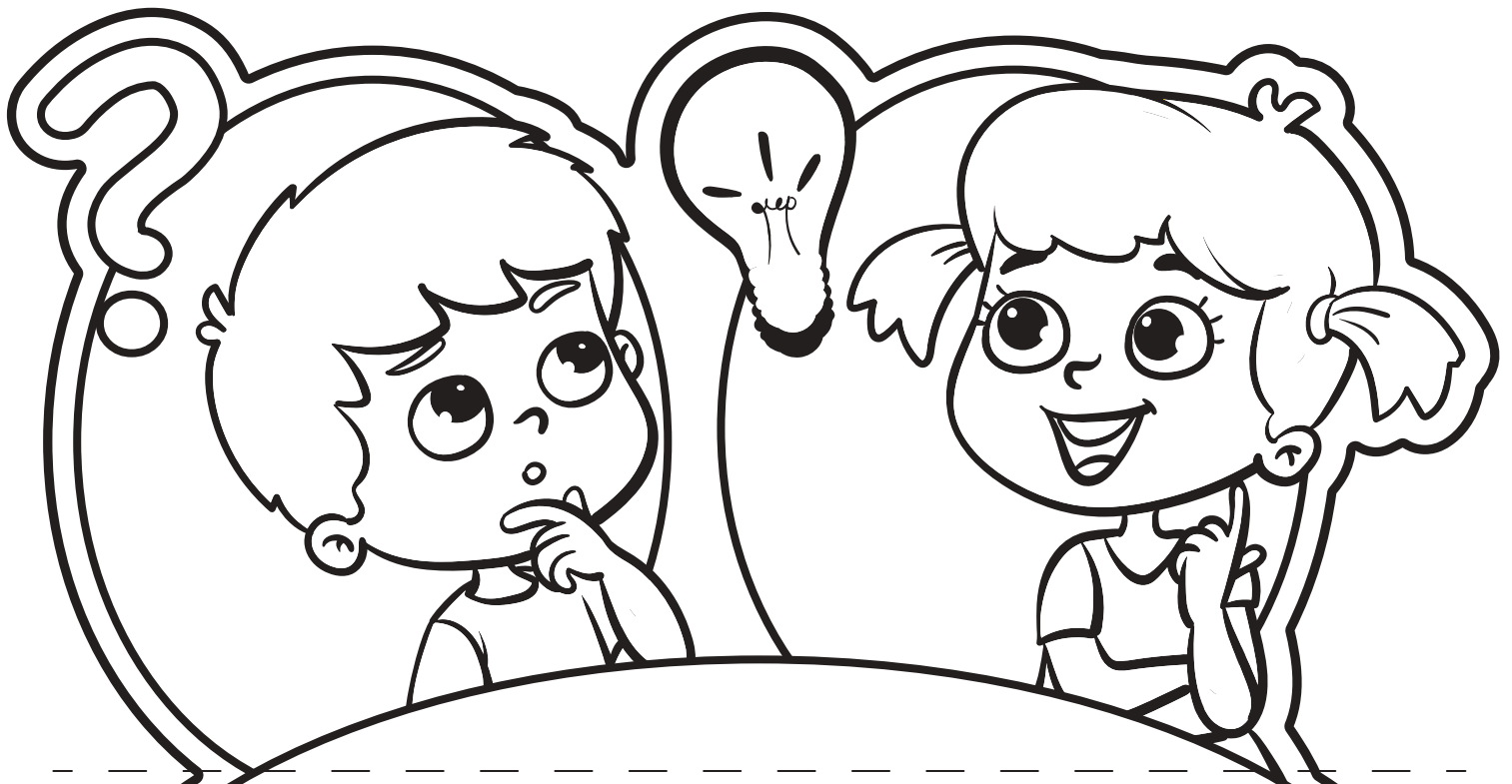
ANALYZE THE DATA

After gathering data from the experiment, it's time to analyze the results. This is where you look at patterns or differences to see if they support or refute your hypothesis.



DRAW A CONCLUSION

Finally, based on your data, determine if your hypothesis was correct. If the data supports the hypothesis, it's confirmed. If not, it may need to be revised or a new hypothesis can be formed.



**SCIENTIFIC
METHOD**